

The Prepared Parent

Getting Ready For Camp

Important Information!

You help with the obvious things like packing and taking your child to camp, but you may not be sure what else you can do. This newsletter provides useful ideas you may apply to help your child receive the best camp experience. This will help prepare your camper for camp and keep you involved in the process. If there is anything we can do to assist you, please let us know! We are looking forward to having your child with us for summer camp. See you soon!



PACK TOGETHER

Work with your child to pack so they will know what is packed and their favorite items are included. We recommend sending play clothes, comfortable shoes, and other items that are replaceable if they get lost or misplaced. Talk with your child about how to manage their belongings in a shared living environment. A **recommended** packing list can be found online at www.rainbowcamp.org.



If you send medicines with your child to camp, **do not** place them in luggage. At Check-In, ALL medicines must be given to the nurse in their original containers with instructions.

TALK ABOUT MONEY

While at camp, children can use cash for missions and canteen purchases. Talk to your child about your expectations of the money sent with them for these purposes. Your child can help in providing money for camp by doing extra cleaning jobs around the house or recycling aluminum cans.



Before sending your child to camp, talk with your child about giving money to support missionary work all over the world.

The opportunity for your child to purchase snacks and refreshments at the Canteen could happen daily or one to two times during their stay at camp. The average camper spends from seventy-five cents to two dollars per visit on snacks.

TALK TO YOUR CHILD ABOUT PICTURES

Camp is a great place to make memories and friends for a lifetime. Disposable cameras are an inexpensive way to equip your child with picture-power. Write your child's name on the camera. Pictures are also available for purchase through our website, www.rainbowcamp.org, after your child's week of camp has concluded.



WHAT NOT TO BRING

Electronic devices, games, radios, music players, cell phones, secular music and food (dietary needs and wilderness adventure trips excluded) should be left at home. (Please alert the staff to any special dietary concerns prior to coming to camp.) Items not permitted at camp will be collected and held in the office to be picked up at Check-Out. Firearms, knives, and incendiary devices are not allowed and are considered a safety violation. Campers caught bringing these types of items to camp may be subject to legal action.

DRESS CODE

All clothing must be modest. Shorts and skirts should be below fingertips with hands at sides. No tight apparel, exposure of underclothing, plunging necklines, sagging and low-riding pants, spaghetti strap tank tops, two piece or immodest one-piece swim suits. A covering must be worn to and from the pool. (Guys wear shirts.) Any child with apparel considered inappropriate by staff will be required to change. For safety reasons, footwear is required to be worn except at designated times.

BEHAVIOR

Courtesy, listening, respect, good manners and a cooperative attitude are expected of all campers. Everyone must stay on the camp grounds and abide by the schedule unless excused



Rainbow Christian Camp • 3522 N 1000 W 27 • Converse, IN 46919

phone: (765) 395-3638 • toll free (866) 491-2212

• fax: (765) 395-3819

email: rainbowcamp@rainbowcamp.org • web: www.rainbowcamp.org

What to Expect for Check-In Day!

by the dean. The possession and/or use of tobacco, alcohol or illegal drugs is prohibited. No food or drink is permitted in the cabins. Physical violence, hazing, and fighting are not permitted. Campers are expected to respect each other and be good stewards of the camp property.

Any camper found outside the cabins after lights out, without permission, who refuses to cooperate, or who poses a threat to other campers will be sent home without a refund. Parent(s)/Guardian(s) will be notified and expected to honor this action by picking up their child promptly.

GETTING READY FOR CHECK-IN DAY

Please bring these along with you:

- Medications - Prescription and Over-the-Counter
Bagged in original containers
- Payment for Balance Due - Check, cash, or credit card
(Rainbow Christian Camp pays a 4-5% fee for every credit card transaction. To avoid the fee, use check or cash options.)
- Luggage, sleeping bag, pillow
- Money for Missionary, Canteen, and Camp Store

BRINGING YOUR CHILD TO CAMP

After one last check to make sure you haven't forgotten anything, load up the suitcases, your camper and head to Rainbow Christian Camp! You can find directions to the camp on the last page of this newsletter. Ziba, Hands & Feet, and ALL Day camps will have registration at 9:00am on the day of their check-in. All other camps check-in at 5:00pm. Check-In will not start early, but you are welcome to come early and visit the Camp Store or walk around the grounds. **If you are dropping off campers who are not yours, please make sure all forms and balances are taken care of at check-in.**



NOTE-WRITING STATION

For 20 minutes before and after Check-in, the Note-Writing station will be available to write notes and schedule their delivery during your camper's stay at camp.

Fold your message and label it with your camper's name, the program name (Extremes, Jungle Huts, etc.), and the cabin number if applicable. Place it in the correct box and we will deliver it accordingly.

CAMP CHECK-IN

- ◆ Please park and leave all luggage in your vehicle.
- ◆ Check-in for all camps will be in the Conference Center.
- ◆ There will be one line to begin the Check-in process.

Step 1: Check-In Table *Required*

- ✓ Choose appropriate table for camp session
- ✓ Check Camper in
- ✓ Receive Parent Pick-up Card & Check-Out information
- ✓ Receive a Camper wristband
(If a balance is due or you need to turn in paperwork, you will be directed to the appropriate table to complete the check-in process)

Step 2: Nurse Station *Optional*

- ✓ Turn in **All** Medications
- ✓ Talk with Staff about any camper specific health needs

Step 3: Dean *Optional*

Take this opportunity to meet the dean and ask any questions you may have about your child's stay at camp.

Step 4: Cabins

Main Camp: Carry luggage to the correct cabin and help your camper get settled in. Take some time to talk with the faculty in your camper's cabin. They will be working directly with your camper all week.



Jungle Huts: Carry luggage to the wagon parked in the parking lot. At the wagon you will receive further instructions.

Thai Huts: Carry luggage to the canoes near the swamp. At the canoes you will receive further instructions.

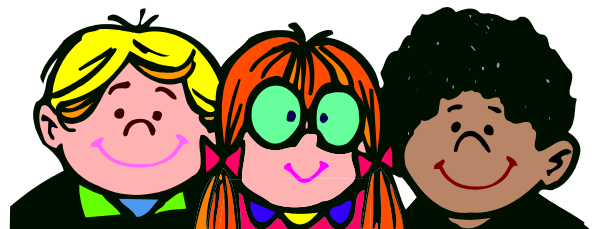
Once you are done getting your camp settled, say your good-byes and either write quick notes at the Note-Writing Station or start on your way home.

FREE T-SHIRTS

If you registered your camper ONLINE before April 30th, he/she will receive a free Rainbow Christian Camp t-shirt. Take your Parent Pick-up card to the Camp Store to pick-up your child's free t-shirt.

CAMP STORE

The Camp Store is open during check-in and check-out days only.



While your camper is at camp

WRITE TO YOUR CAMPER

Campers love to get mail! Mail can be sent via USPS or e-mail.

1) USPS Mail: Please include camper's name, cabin number, and camp date.

2) E-MAIL is available online through www.rainbowcamp.org. The link can be found at the top of the home page. Click on **Camper Mail**. E-mails received by 9:00 am will be delivered the same day.

Note: All mail received after 9:00 am on Check-Out day will not be delivered.

PICTURES at www.rainbowcamp.org

Pictures will be available for purchase online through www.rainbowcamp.org. The link can be found at the top of the home page. Click on **Programs**, then **Photo Gallery**. These will not be available until AFTER your child attends camp. In an effort to protect our campers we will only post pictures after they have left the property.



PRAY

There is one very powerful thing that you can do for your child at camp – **pray!** Pray for your child's spiritual development and health while they are away. Pray for the camp staff and faculty. Ask your camper to pray for their upcoming week of camp, that it will help to deepen their understanding of God's love.

HOMESICKNESS

Occasionally, campers have a hard time being away from home. It is the camp's policy that campers are not allowed to use the phone. It is best *not* to focus on homesickness in your discussions before camp. If a child becomes homesick, the camp staff will work with them to help get them through their homesickness.



LIVING AT CAMP

Camping can be a new and exciting experience for your camper.

Eating: Our food service team provides a variety of great foods for campers to eat; cereal or PBJ are available upon request. Campers are responsible for getting their food and putting up their dirty dishes when they are finished eating.

Sickness: If your child gets sick or injured while they are here at camp we will call you to keep you informed about your camper. It is the camp's policy to send a camper home if they have a fever. We will work to see that your child is well cared for.

Bathing/ Hygiene: The camp has showers. Jungle and Thai Hut campers shower at the pool house. Campers are encouraged to change their clothes, brush their teeth, and keep reasonably clean each day.

Cleaning: Campers are asked to keep their living, eating, and playing spaces clean. We believe living in community is part of being a Christian.

DECISIONS FOR CHRIST

If your child expresses a desire to be baptized, the Dean will call you to discuss the decision. Baptisms typically occur on the last day of camp around 3:30 pm. Family and friends are encouraged to attend. You may choose to wait until after camp to talk with your minister or youth minister about it. It is the camp's policy that children under the age of 18 must have their parents'/guardians' permission to be baptized at camp.



CHECK-OUT

Please be prompt when picking up your camper on Check-Out day. Check-out is at 4:30 pm. except for horse day camps, which will check-out at 5:00 pm. When you arrive, you may find your camper's luggage and load it. Any camps including campers **5th grade and under** will have a secure check-out. **Parent(s)/Guardian(s) must show a photo ID, present the parent pick-up card and sign the release form** before their camper will be released. Check-out will not begin early and is usually done in 30 minutes or less.

Before you leave, please...

- ❖ pick up any left over medication from the nurse
- ❖ check the lost and found table for items belonging to your camper.



Once you have your camper home.

WELCOME YOUR CAMPER HOME

Your child will be tired after you pick him/her up. Going home is a sudden change of pace. Campers are also leaving behind friends. Don't be offended if your child isn't as happy to see you as you are to see him/her. When your child is ready to talk about the camp experience, listen closely and ask open-ended questions to encourage your child to share. For example, you can ask your child to tell you about his/her favorite activity at camp, favorite person at camp, and what his/her most difficult time at camp was. Asking questions like these may help the conversation.

ENCOURAGE SPIRITUAL GROWTH

Whether your child made a decision to follow Christ while at camp or not, your child needs to continue a growing process once at home. We encourage you to pray for and with your child. Help them find devotional material and teach them how to study the Bible so they can have a daily quiet time with God. You could take them to the Christian bookstore and let him/her pick out a devotional book and/or Bible appropriate for his/her age group. If your child isn't already connected with a local church, take this opportunity to find a church the whole family can attend. If there is any way the camp can help, please let us know.

Some material adapted from: Evans, Cheri. (1997). "Preparing Your Child for Camp." CCA Focus 10.



DIRECTIONS TO THE CAMP

From the Wabash Area and North:

Drive south on SR 13. Turn right on 400 N and go 2 miles. Turn left on County Line Road (1000 W/1100 E) Rainbow Christian Camp is located 1.5 miles on the left.

From the Indianapolis Area and South:

Take I-69 to SR 18 West. Travel through Marion to Converse. Turn right on County Line Road (1000 W/1100 E) at the "What-A-Wash" car wash sign. Rainbow Christian Camp is located 1.5 miles on the right.

From the Kokomo Area and West:

Take US 31 to Hwy 35/22 and travel east through Greentown. Turn left onto 1350 E (Old 513) and travel to SR 18 East. At SR 18, turn right and go about 1 mile to County Line Road (1000 W/1100 E) and turn left at the "What-A-Wash" car wash sign. Rainbow Christian Camp is located 1.5 miles on the right.

From the Anderson Area and East:

Travel North on SR 9 to SR 26 and turn left. Turn right on SR 13 North to SR 18. Turn left on SR 18 travel to Converse. Turn right on County Line Road (1000 W/1100 E) at the "What-A-Wash" car wash sign. Rainbow Christian Camp is located 1.5 miles on the right.

